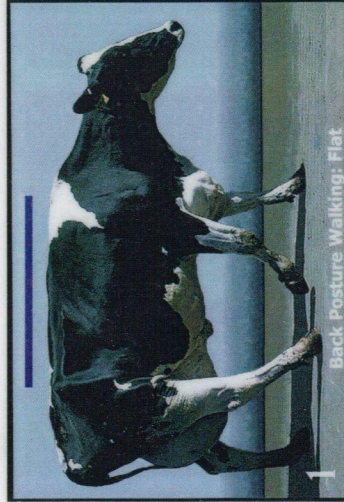
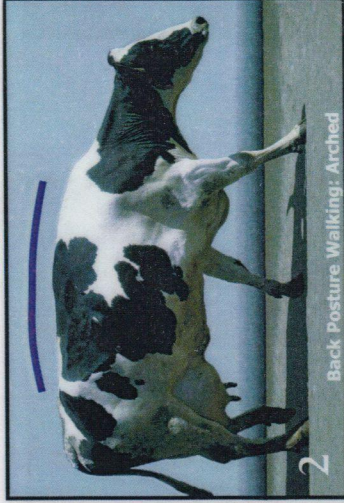


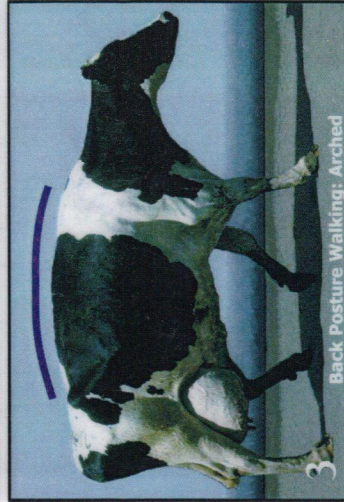
Locomotion Scoring



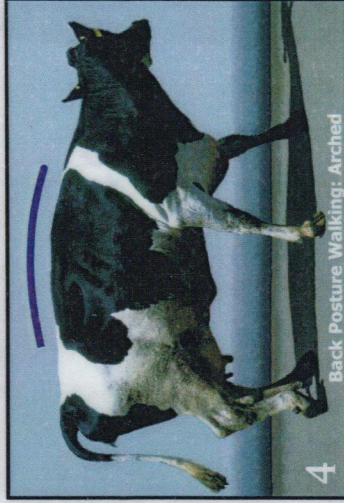
Back Posture Walking: Flat



Back Posture Walking: Arched



Back Posture Walking: Arched



Back Posture Walking: Arched

Score 1 Normal - Stands and walks normally with a level back, makes long confident strides.

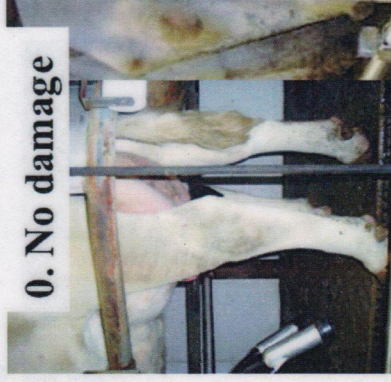
Score 2 Mildly Lame - Stands with flat back, but arches when walks. Gait is slightly abnormal.

Score 3 Moderately Lame - Stands and walks with an arched back and short strides with one or more legs. Slight sinking of dew-claws in limb opposite to the affected limb may be evident.

Score 4 Lame - Arched back standing and walking. Favoring one or more limbs but still can bear some weight on them. Sinking of the dew-claws is evident in the limb opposite to the affected limb.

Score 5 Severely Lame - Pronounced arching of the back. Reluctant to move, with almost complete weight transfer off the affected limb.

Hock Injury Scoring



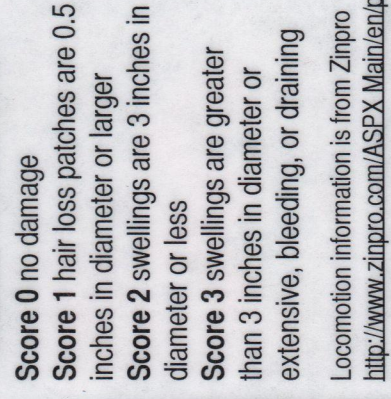
0. No damage



3. Severe swelling



1. Hair loss



2. Swelling

Score 0 no damage

Score 1 hair loss patches are 0.5 inches in diameter or larger

Score 2 swellings are 3 inches in diameter or less

Score 3 swellings are greater than 3 inches in diameter or extensive, bleeding, or draining

Locomotion information is from Zinpro <http://www.zinpro.com/ASPX/Main/en/pdf/Locomotion%20scoring%20guide.pdf>.

Hygiene information is from U-MN Extension Service <http://www.ansci.umn.edu/dairy/toolbox/13-cleanliness.pdf>.

Body Condition information is from U-WI Dairy Science Dept. <http://dairynutrient.wisc.edu/302/page.php?id=36>.